

安徽人口职业学院

Anhui Vocational Institute of Population



2016届 毕业生就业质量 年度报告

2017 1





.....	1
.....	2
.....	

	28
了	30

2016



2017

2013 25

2016

1. 2016 8 31

2.

1 2016 2016 11 21 12 23 201
75.56%

2 2016 11 21 12 24 , 39

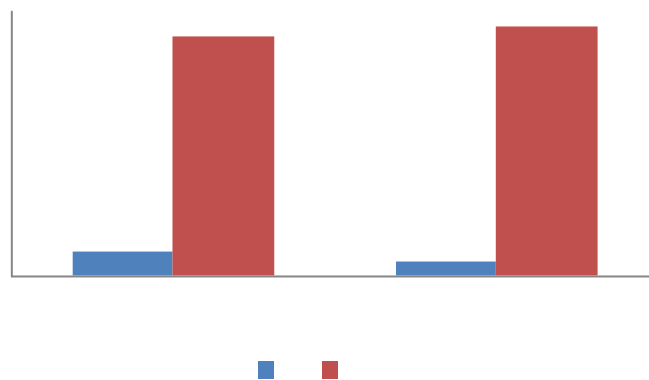
2016 266 2 6
201 75.56% 1-1-1

1-1-1 2016

		人	%	人	%
		212	79.70	165	82.09
		26	9.77	21	10.45
		238	89.47	186	92.54
		14	5.26	7	3.48
		8	3.01	5	2.49
		4	1.50	2	1.00
		2	0.75	1	0.50
		28	10.53	15	7.46
		266	100.00	201	100.00

2016

2016 241 25 190
11 1-1-1



1-1-1 2016

%

2016



2016

26.32% 16.17% 9.40%

1-1-2

1-1-2 2016

		%		%
	70	26.32	54	26.87
	43	16.17	30	14.93
	25	9.40	21	10.45
	20	7.52	14	6.97
	19	7.14	17	8.46
	15	5.64	9	4.48
	14	5.26	12	5.97
	13	4.89	11	5.47
	11	4.14	7	3.48
	11	4.14	9	4.48
	9	3.38	7	3.48
	4	1.50	4	1.99
	4	1.50	1	0.50

1-2-2 2016

1

1-2-2 2016

	人	人	%
	26	26	100.00
	2	2	100.00
	212	204	96.23
	8	7	87.50
	14	11	78.57
	4	3	75.00
	266	253	95.11

2

2016

93.98%

/ /

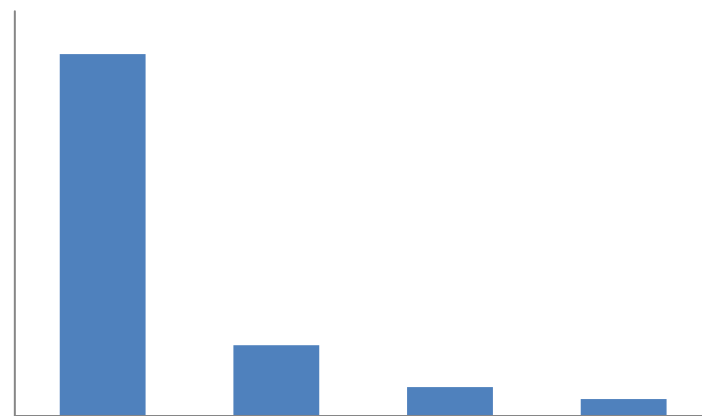
250

1.

71.60%

16.40%

1-3-1 1-3-2



1-3-1 2016

%

人

/ /

人

1-3-2 2016 %

2.

2016

250

179

71.60%
63.41%

1-3-3

1-3-3 2016 %

3.

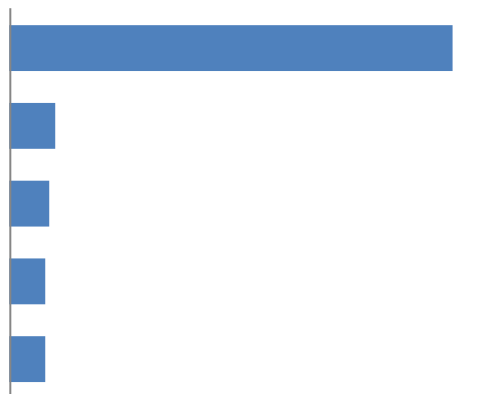
38.65%
50-300
29.45% 1000
17.79% 1-3-1
1-3-1 2016

	%						
50	1.23	3.07	6.13	4.29	2.45	6.75	23.93
50-300	9.20	3.68	5.52	3.07	1.84	6.13	29.45
300-1000	10.43	5.52	0.61	0.61	1.23	1.84	20.25
1000	17.79	0.61	0.00	1.23	0.61	6.13	26.38
	38.65	12.88	12.27	9.20	6.13	20.86	100.00

2016

4.

2016 62.80%
1-3-4

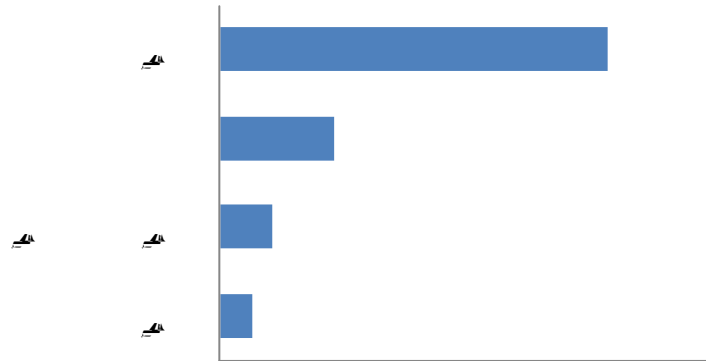


1-3-4 2016 %

5.

2016
62.40%

1-3-5



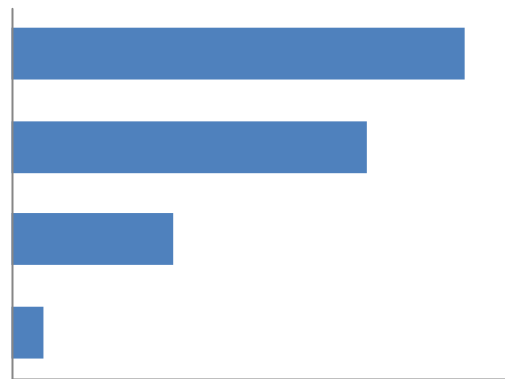
1-3-5 2016 %

2016

45.16%

35.48%

1-4-1



1-4-1 2016 %

2016



位

2016 2

位

2016

8 5 73

2015
105

分

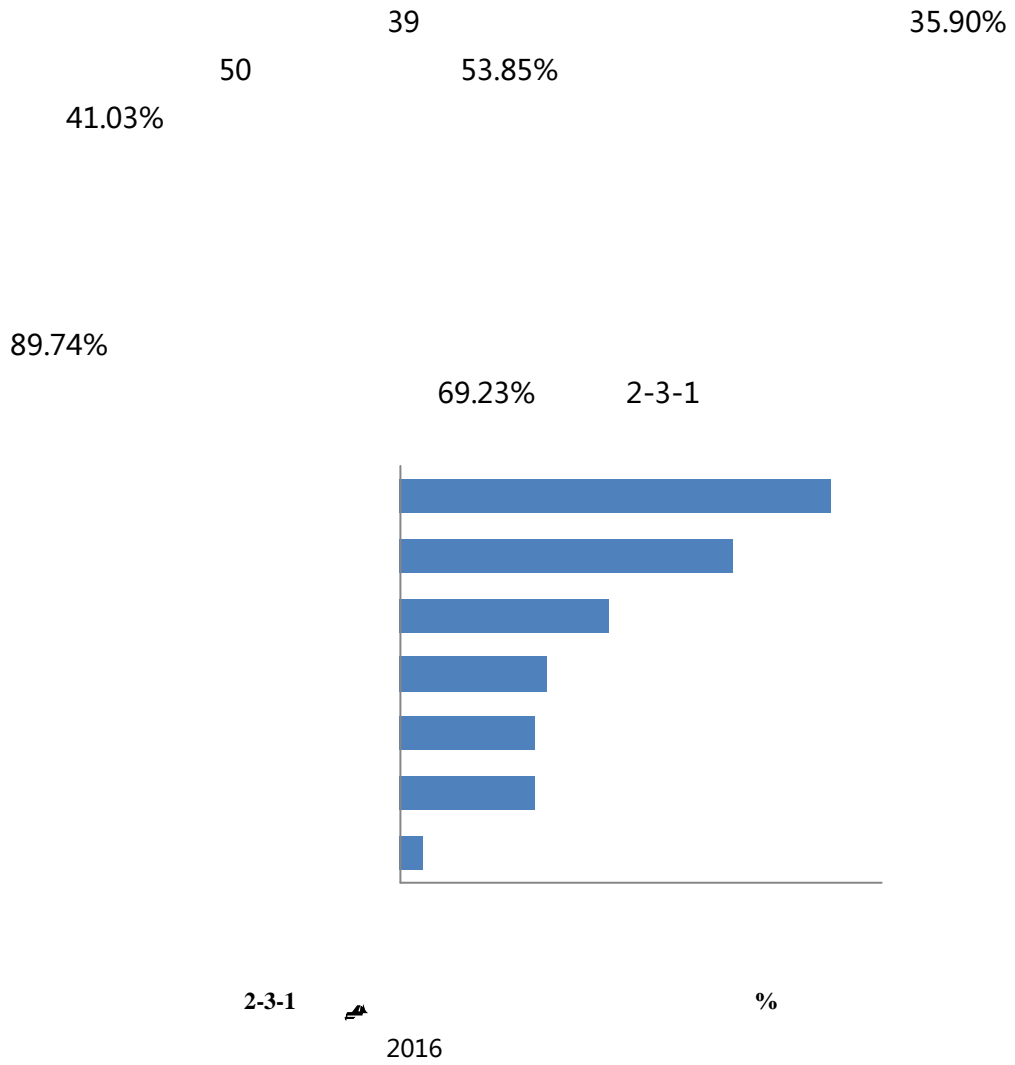
2016
92

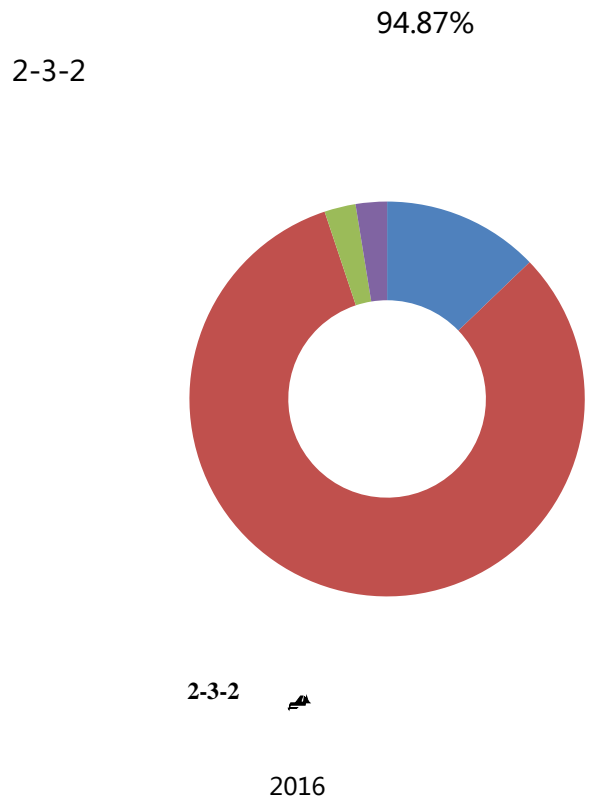
2016 5 10

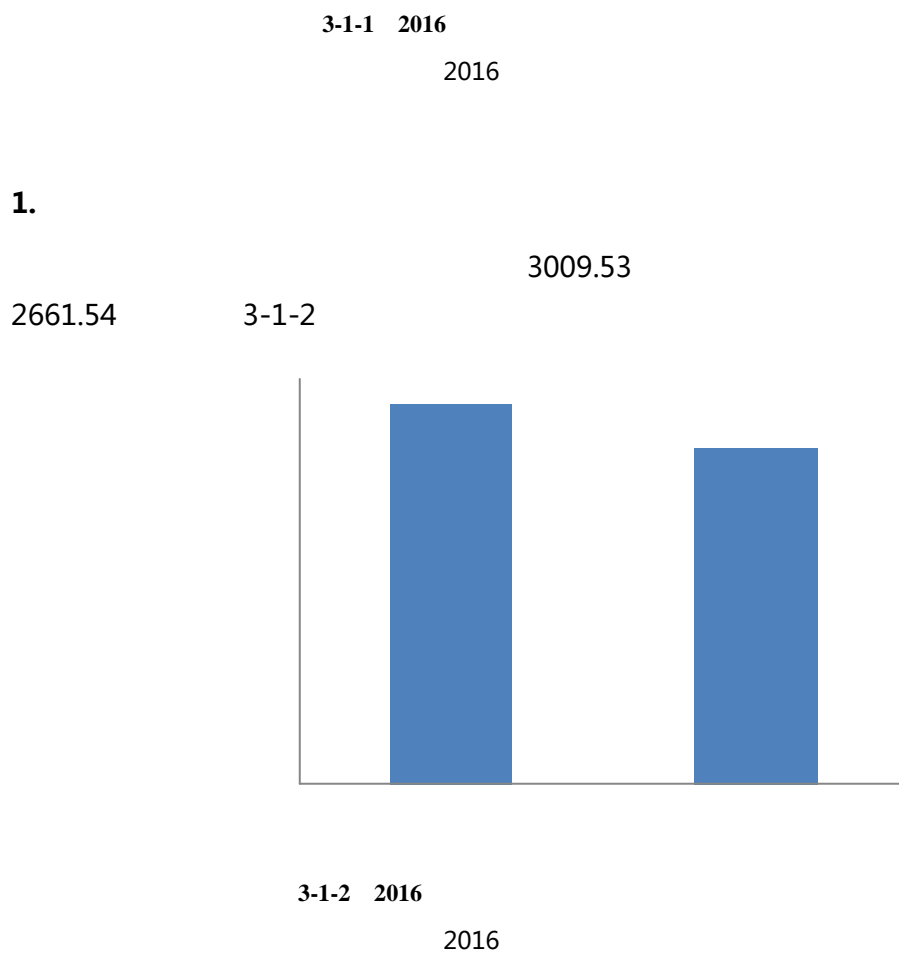
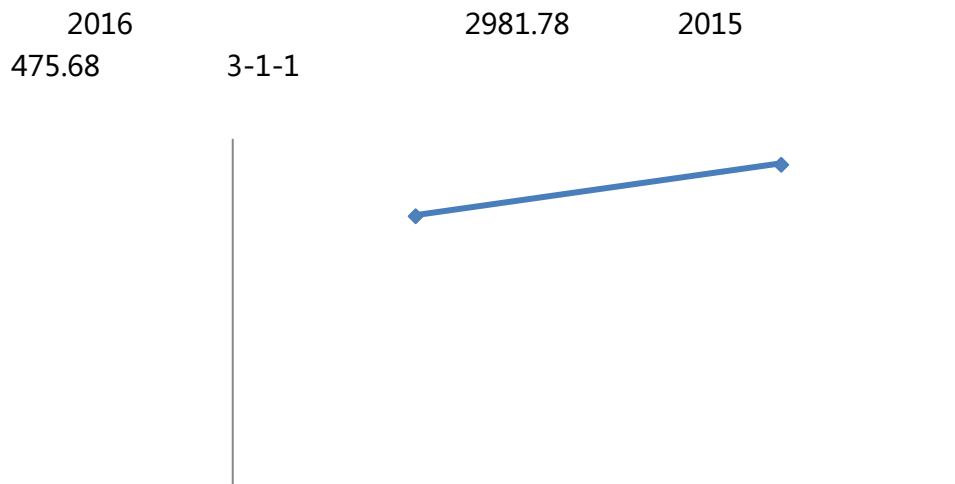
2016

了









2.



3-1-1 2016

2995.04

3140.00

1

3-1-1 2016

	 2				
	135	2995.04		4	2412.50
	15	3140.00		2	3125.00
	6	2616.67		1	3000.00

2016




1.

2981.78

3-1-2

3052.09

3-1-2 2016

					
	110	3052.09		2	2600.00
	14	2500.71		2	2875.00
	7	3042.86		1	3700.00
	6	3891.67		1	4000.00
	5	2716.00		1	3000.00
	5	2212.00		1	3000.00
	4	2125.00		1	5000.00
	2	2825.00	↑	1	2200.00

2016



2.

2981.07

2981.78

3-1-3

3-1-3 2016

	131	2981.07		2	3350.00
/	9	2350.00		1	3000.00
	9	3067.78		1	2200.00
	6	3641.67		1	4000.00
	3	3000.00			

2016

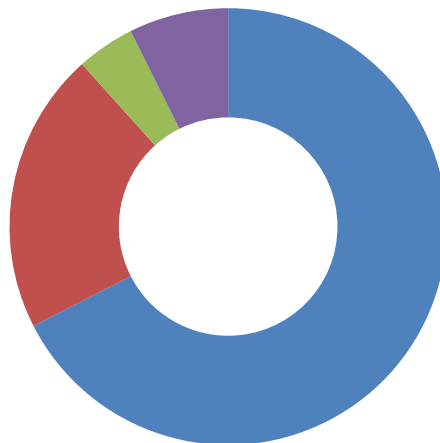
位

位

2016

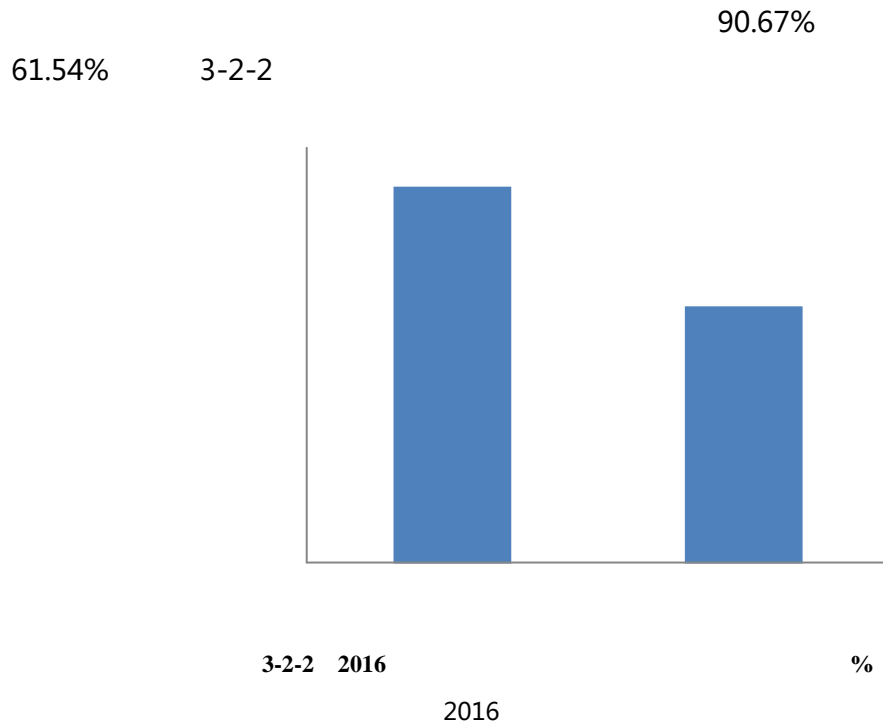
3-2-1

88.34%



位

1. 位



2. 位

2016

3-2-1 2016

	位	%		位	%
	135	90.37		4	75.00
	15	93.33		2	100.00
	6	50.00		1	0.00

2016

位

1. 位

99.09% 10.75 3-2-2

3-2-2 2016

					%
	110	99.09		2	0.00
	14	100.00		2	50.00
	7	100.00		1	100.00
	6	16.67		1	0.00
	5	100.00		1	100.00
	5	20.00		1	0.00
	4	50.00		1	0.00
	2	50.00	个	1	100.00

2016

2. 位

99.24%

10.90 3-2-3

3-2-3 2016

					%
	131	99.24		2	50.00
/	9	44.44		1	100.00
	9	44.44		1	100.00
	6	16.67		1	0.00
	3	66.67			

2016

位

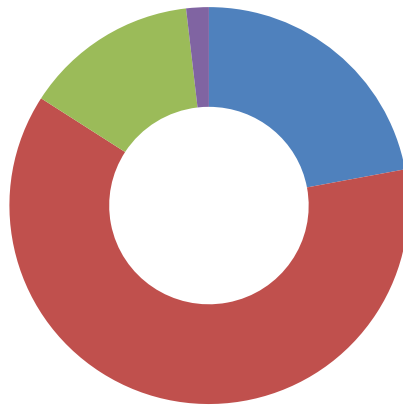
位

1. 位

2016

84.05%

3-3-1



3-3-1 2016

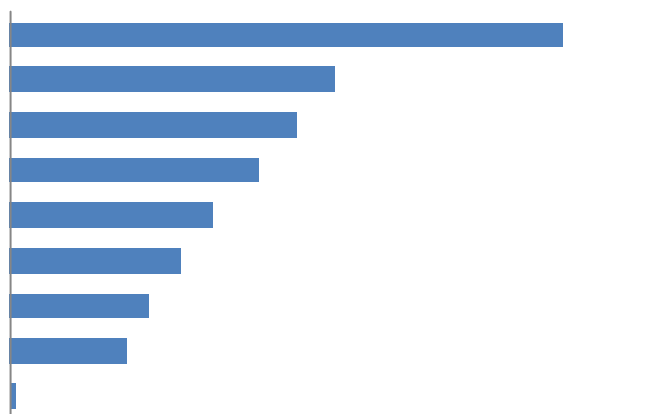
2016

2. 位

2016

75.91%

3-3-2



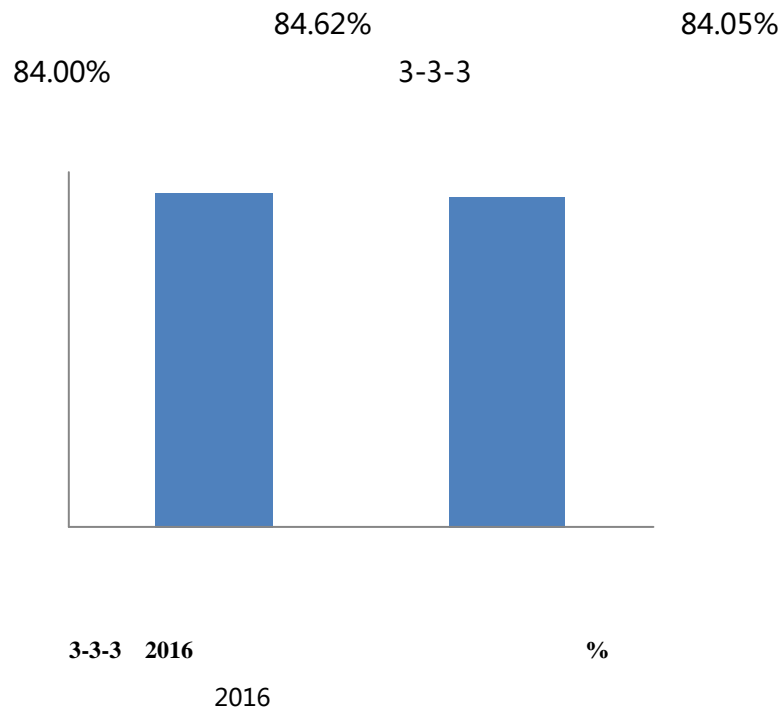
3-3-2 2016

%

2016

位

1. 位



2. 位

3-3-1 2016					
	人数	比例 (%)		人数	比例 (%)
	135	85.19		4	75.00
	15	73.33		2	100.00
	6	83.33		1	100.00

2016

位

1. 位

87.27%

84.05%

3.22

3-3-2

3-3-2 2016

%

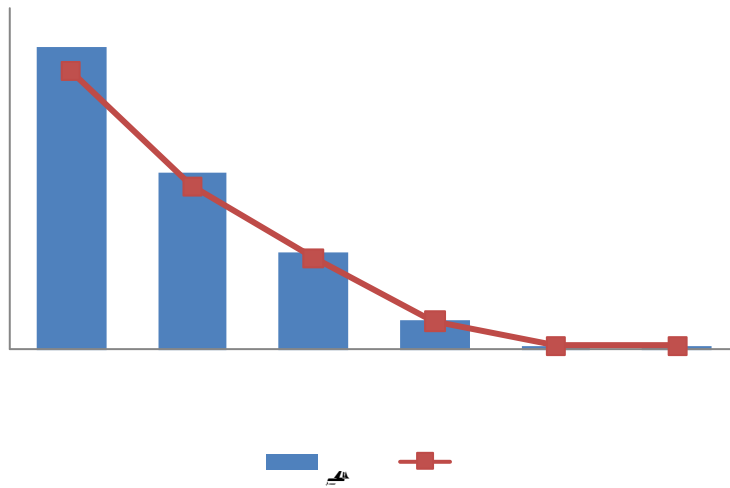




了

1.

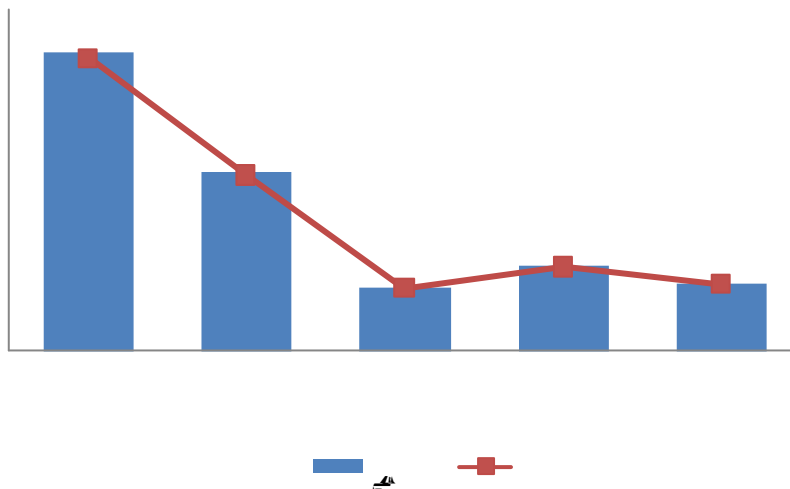
2016
49.08% 2.88 1-2
3-5-1



3-5-1 2016
2016

2.

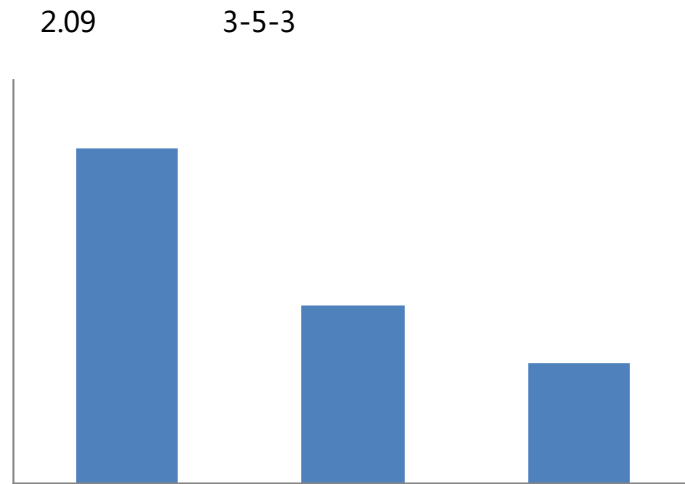
2011
42.94% 955.71 0-500
3-5-2



3-5-2 2016
2016

3.

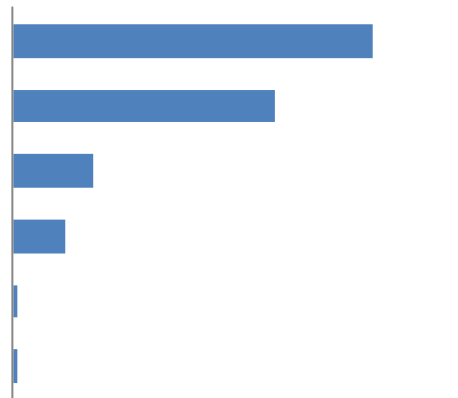
2016



3-5-3 2016
2016

2016

47.24% 34.36% 3-5-4



3-5-4 2016 %
2016

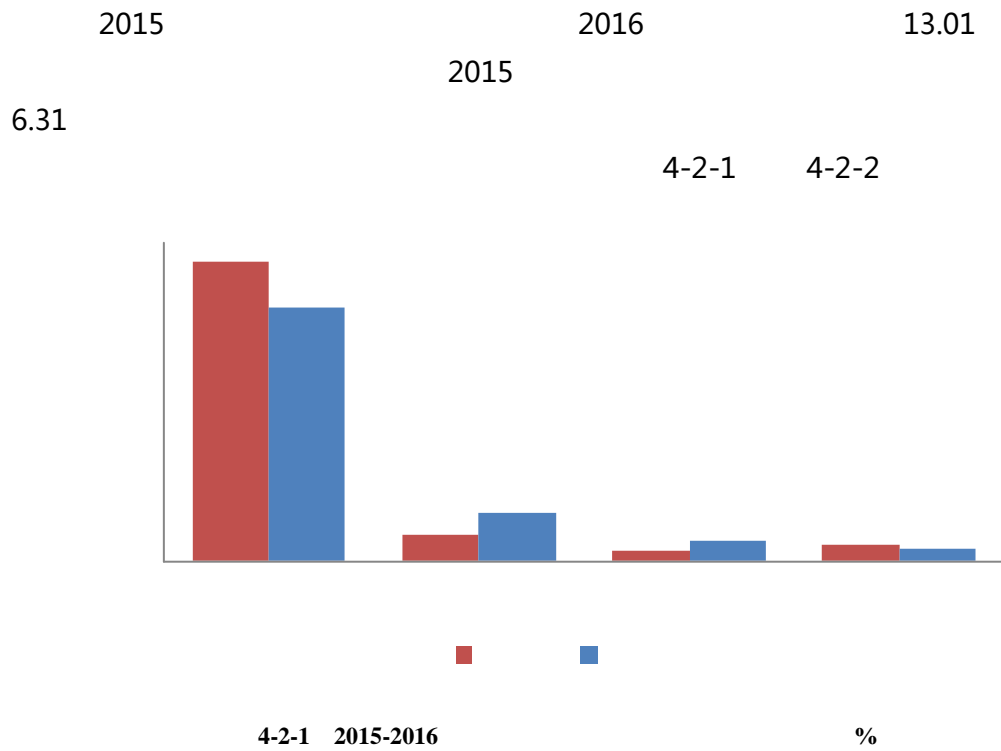
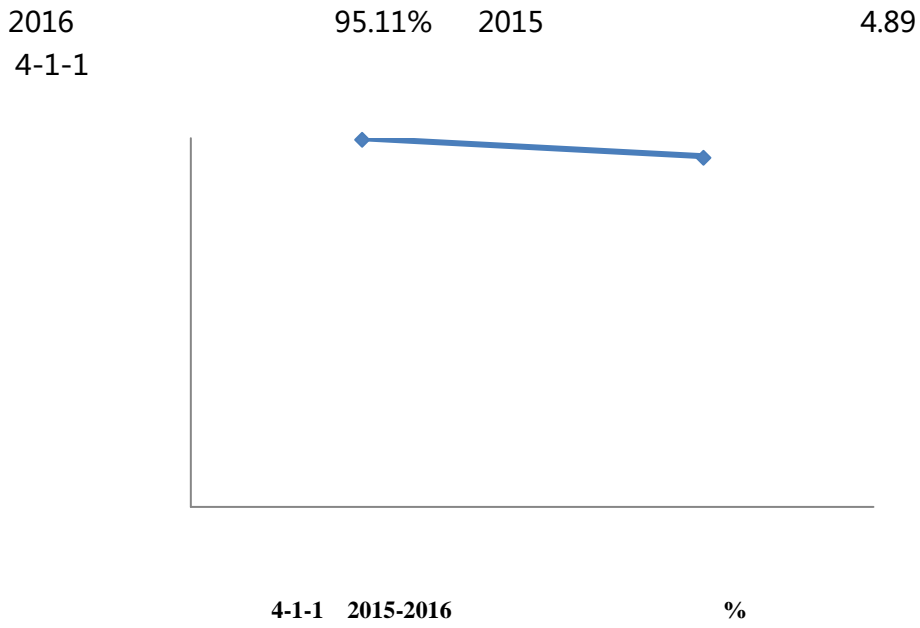


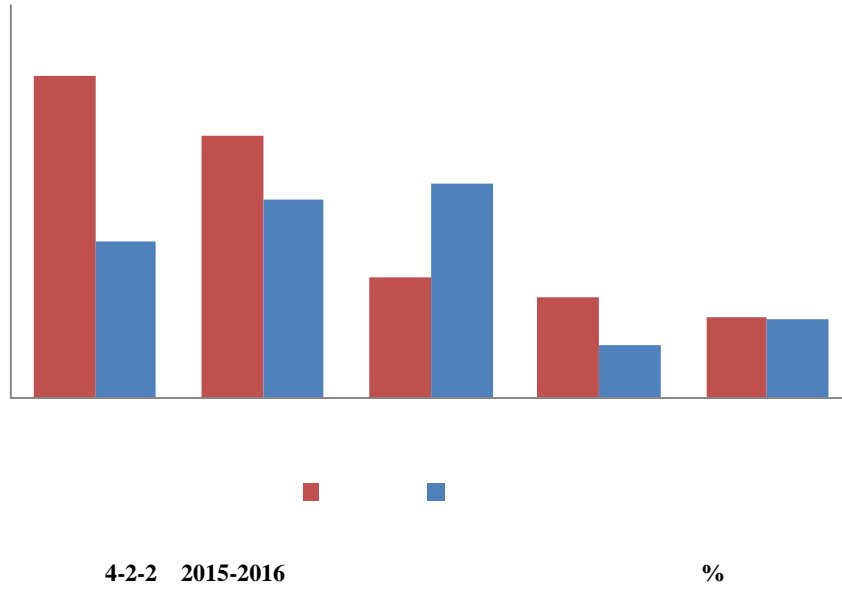
3-5-5

3-5-5 2016

2016

%





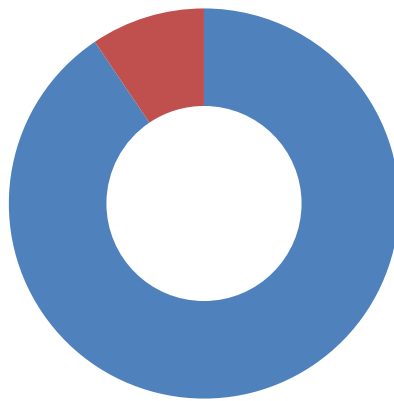
了

位

2016

90.55%

5-1-1



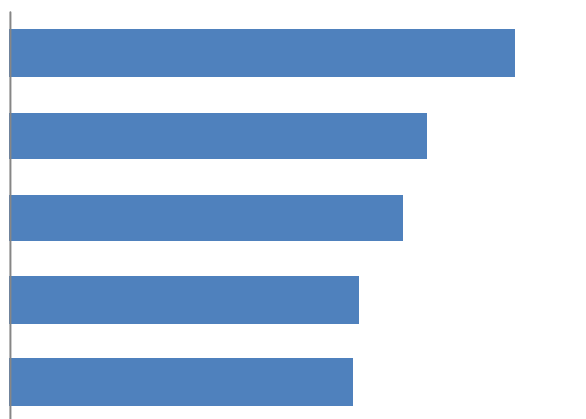
5-1-1 2016

2016

50.00%

5-1-2

为



5-1-2 2016

%

2016

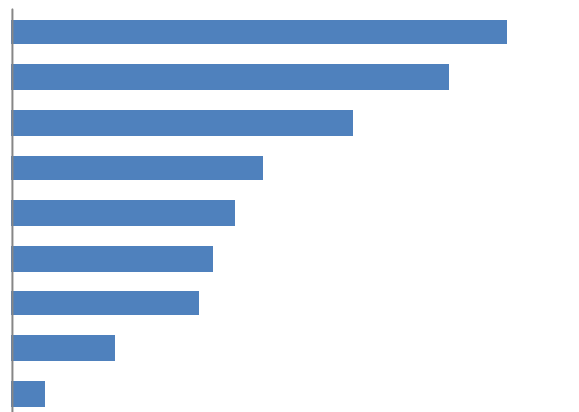
2016
32.84%
5-1-3
47.26%
80.10%



5-1-3 2016

2016

2016
68.66% 60.70% 5-1-4

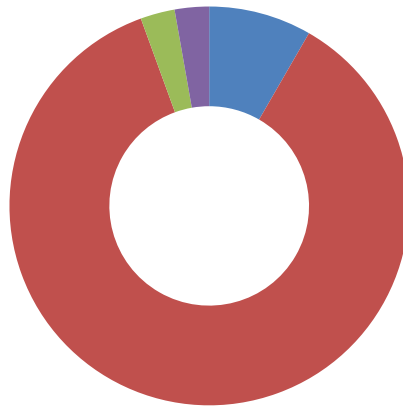


5-1-4 2016

%

2016

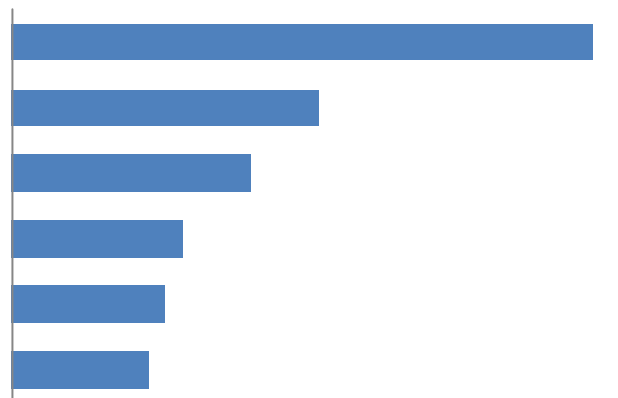
94.44% 5-2-1



5-2-1

2016

5-2-2 2016 94.44%

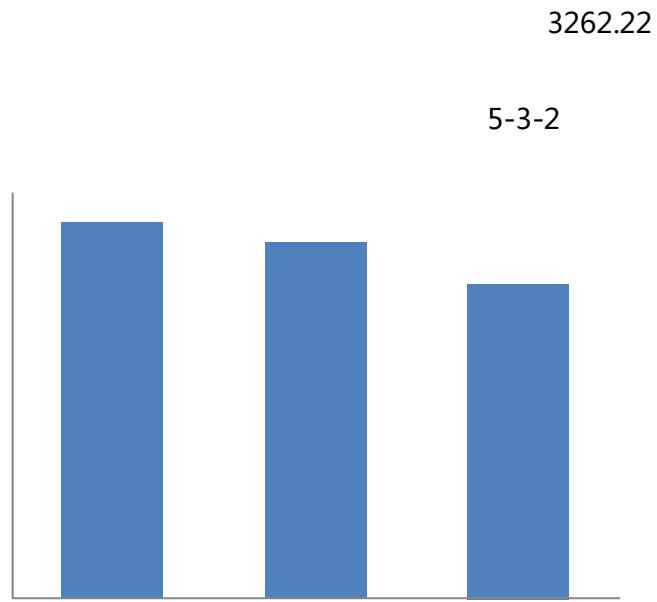


5-2-2

2016

%

2016

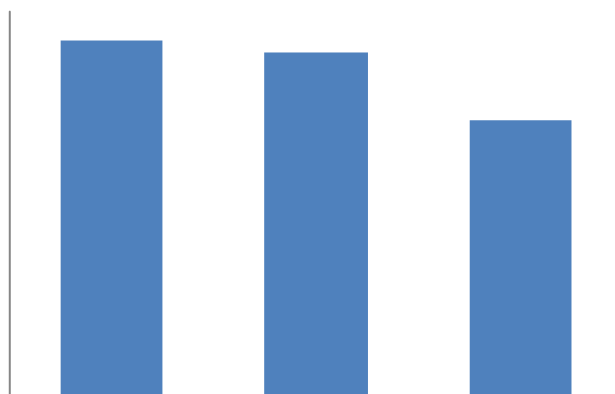


5-3-2 2016

2016

位

5-3-3



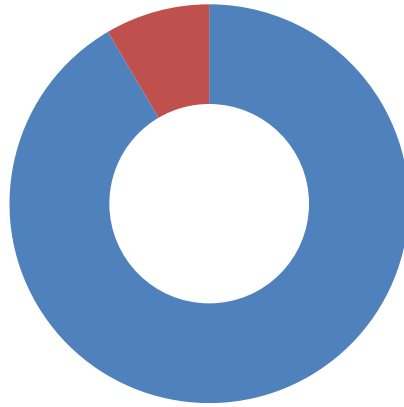
5-3-3 2016

2016

%

2016
5-4-1

91.54%



5-4-1 2016
2016