

2017

2017

			%
		807	86.59
		53	5.69
		860	92.27
		38	4.08
		16	1.72
		54	5.79
		13	1.39
		4	0.43
		1	0.11
		18	1.93
		932	100.00

2.



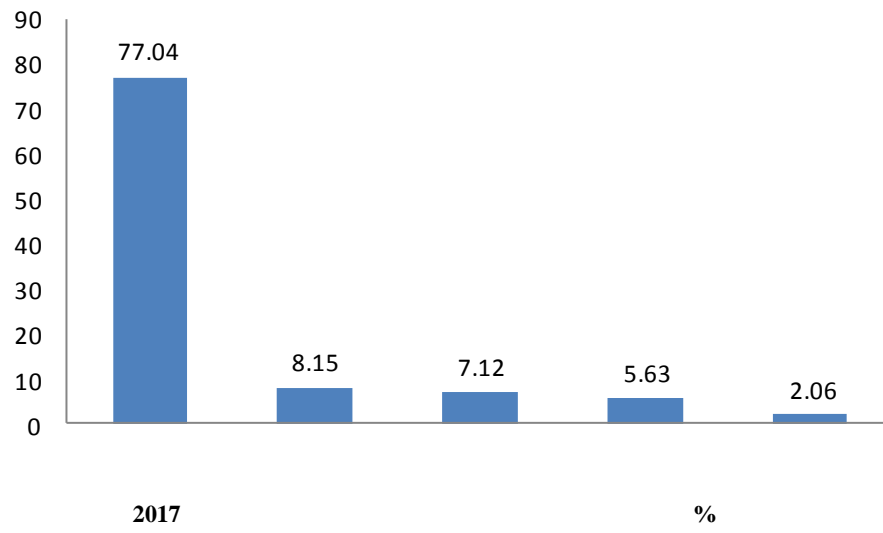
2017

2017

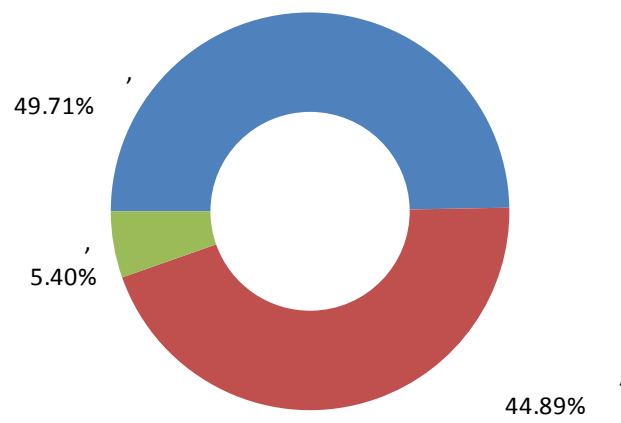
2017

2017		
	773	82.94%
	85	9.12%
	13	1.39%
	1	0.11%
	1	0.11%
	873	93.67%
	59	6.33%
	59	6.33%
	932	100.00%

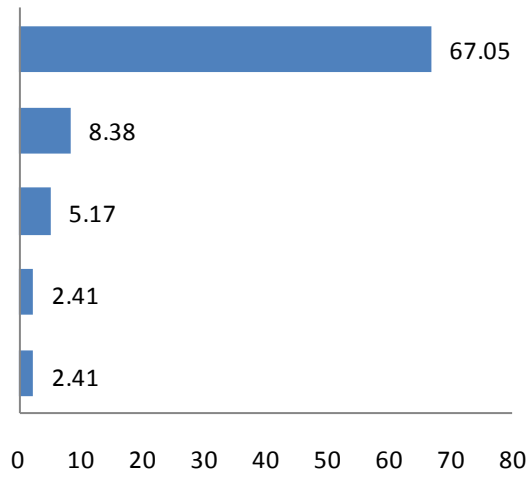
2.



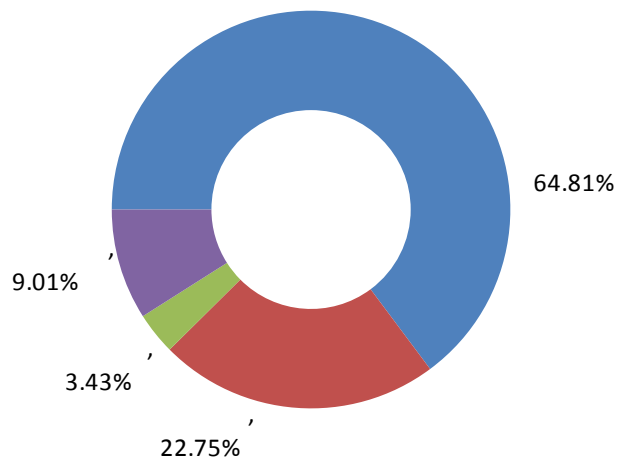
3.



4.



5.



6.

	158	2832.34		3	3200.00
	22	2790.91		2	4600.00
	14	3350.00		2	4300.00
	6	4633.33		2	3350.00
	4	3575.00		2	3250.00
	4	2825.00		2	1850.00
	3	6500.00		1	3000.00
	3	5666.67		1	3000.00
	3	4800.00		1	1800.00
	233	3056.70		233	3056.70

